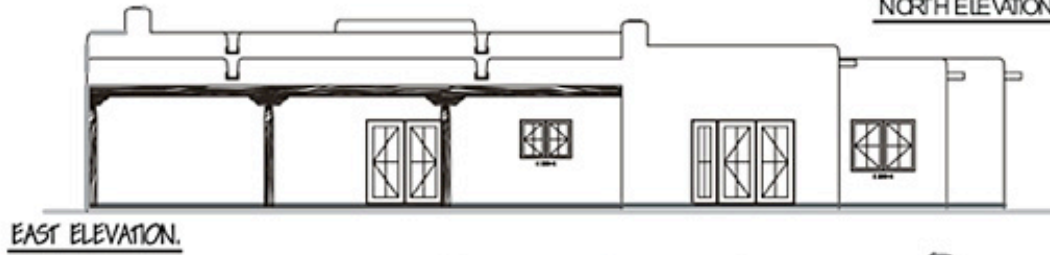
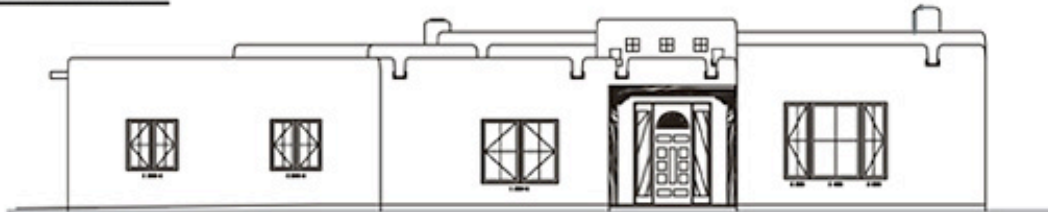


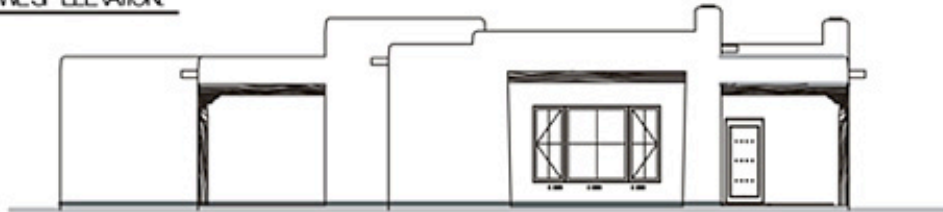
NORTH ELEVATION



EAST ELEVATION.



WEST ELEVATION



SOUTH ELEVATION



## THE PUEBLO Elevation

**2487 SQ. FT. LIVING AREA**  
Garage Option Add 500 SQ. FT. (20' x 25')  
Plans Subject to Change  
Not to Scale  
© copyright 2007 La Mesilla Verde.Com